

CALL TO KNOW MORE ?

📍 1st and 4th Floor, Kalpvruksh Building,
Bramhavrund Colony, Baner Vishal Nagar,
New DP Road, Pimple Nilakh, Pune-27

☎ +91 7448008989 / +91 8007799191

✉ enquiry@vishwachaitanyawellness.com

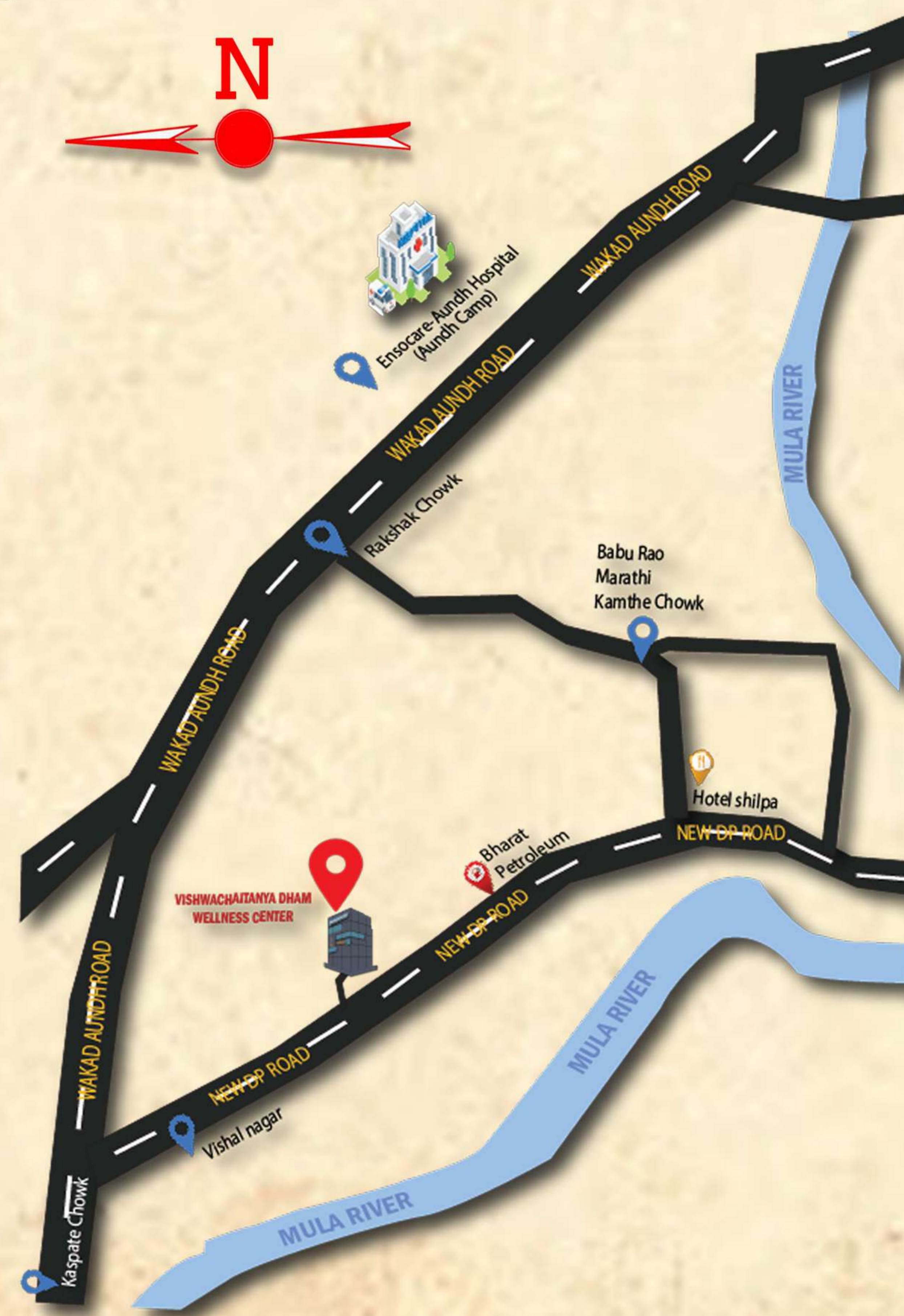
🌐 www.vishwachaitanyawellness.com



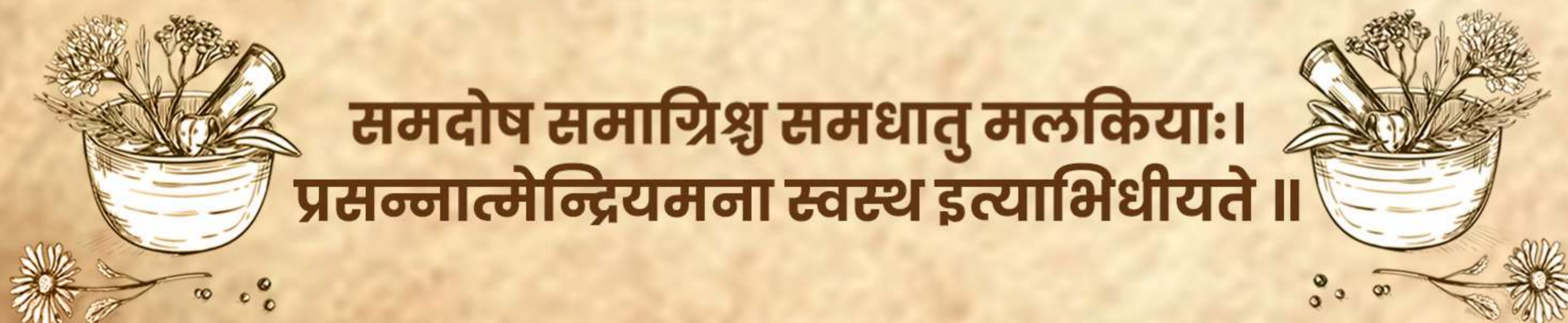
VISHWACHAITANYA DHAM
WELLNESS CENTER

Certified By ISO 9001:2015 | ISO 14001:2015 | ISO 13485:2016

Ayurveda Says,
Disease is caused when
life balance is disturbed.



WE ARE REGISTERED WITH



समदोष समाग्निश्च समधातु मलकियाः।
प्रसन्नात्मेन्द्रियमना स्वस्थ इत्याभिधीयते ॥

www.vishwachaitanyawellness.com

“Unique and Innovative work by Vishwachaitanya Dham Wellness Center”

ABOUT US

We are treating the patients suffering from all types Cancer diseases, Kidney diseases, Diabetes and HIV- Aids by providing you a rare herbs and plants medicines for recovery from diseases.

Because of our Ayurvedic treatments and Unique healing techniques, there are number of victims and patients are recovered from diseases and the recover patients are living their happy and healthy life with families.

We are also providing our Ayurveda treatments at different regions in India as well as all over the globe.

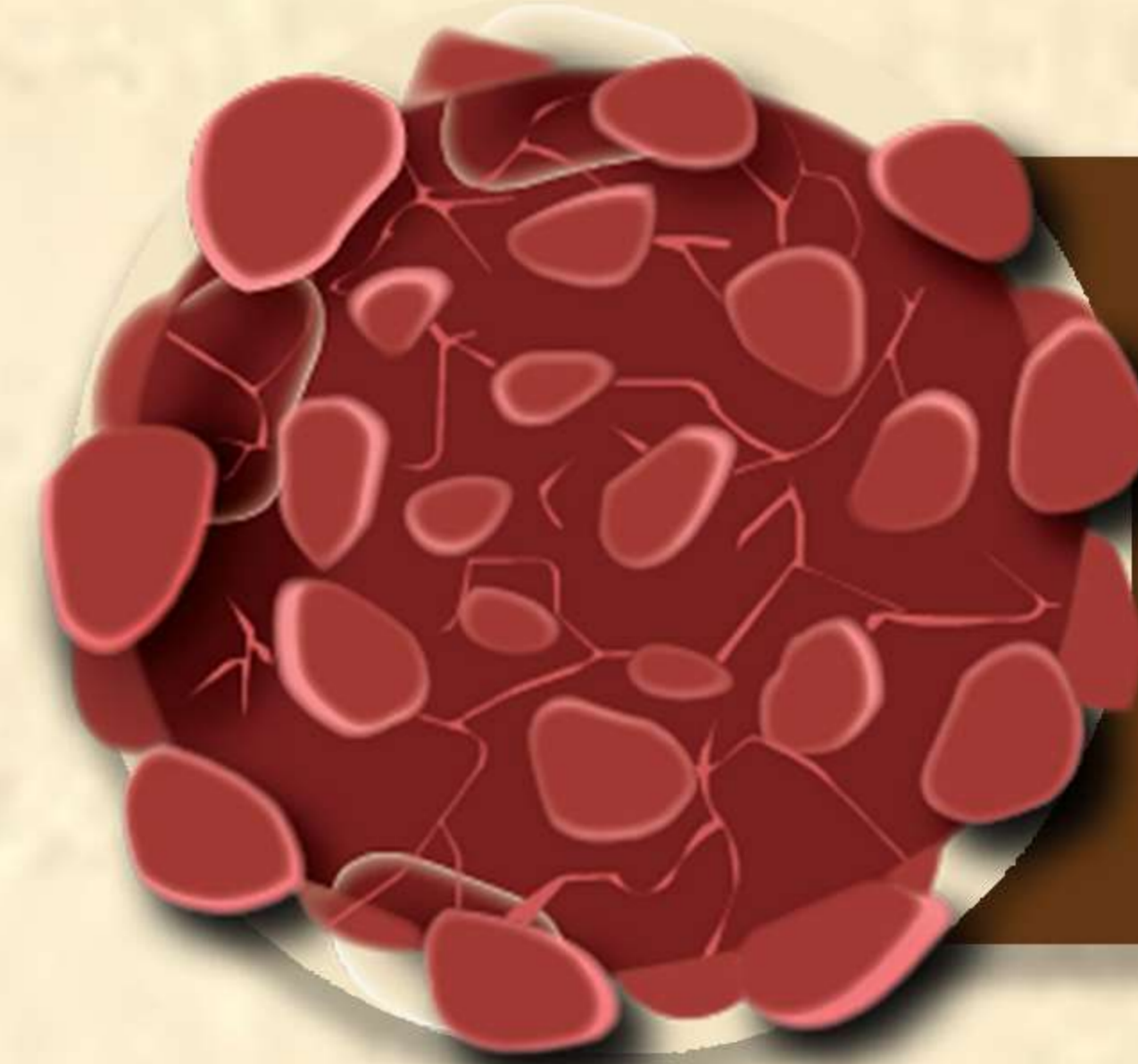
WHY CHOOSE US

- ✓ 100% Traditional Herbal Medication.
- ✓ Professional Health Counsellors & Doctors.
- ✓ Diet & Nutrient Management.
- ✓ Unique Ayurveda Remedies.
- ✓ ISO Certified.
- ✓ 24/7 Support.



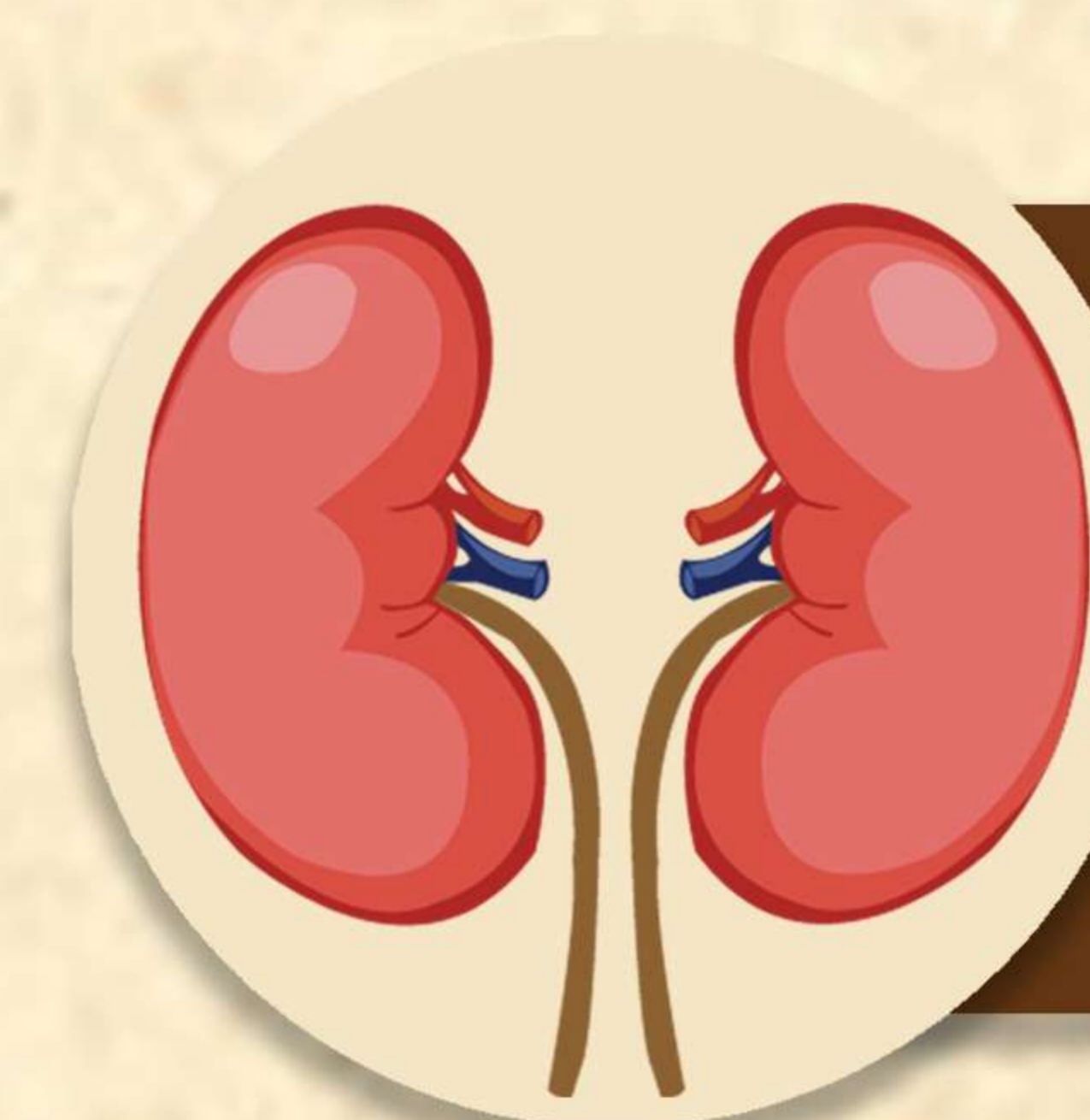
Note : All informations are gather from the sources. It is only for sharing purpose.

TYPES OF DISEASE



CANCER DISEASE

Cancer is regarded as a deadly and complicated disease. It is diseases that grows out of control and affect the tissues and the organs. Over a period of time, a toxin gathers at the site of particular organ, it may results in deadly growth inits other cells.



KIDNEY DISEASE

Kidney disease is a condition that affects the kidney's ability to filter waste products from the blood. It can be caused by various factors such as diabetes, high blood pressure, and kidney inflammation situations of an individuals.

Note : All informations are gather from the sources. It is only for sharing purpose.



DIABETES DISEASE

Diabetes is the global health concern, affecting millions of individuals worldwide. Madhumeha in Ayur-veda can lead to organ failure if not treated. It is important for you to maintain a healthy bodymass Index and eat the right food at the right time, in the right quantity.



HIV-AIDS DISEASE

HIV is a virus that attacks cells that help the body fight infection, making a person more vulnerable to other infections and diseases. AIDS is the late stage of HIV infection that occurs when the body's immune system is badly damaged due to virus.

Note : All informations are gather from the sources. It is only for sharing purpose.

